



MYK LATICRETE

LATICRETE[®] DWA 215

LATICRETE[®] DWA 215 Ready - To - Use Adhesive

- Single Component / Ready to use
- Economical
- Can be used on various Dry Wall Boards
- High Bond Strength

**The Perfect
Bond for
Dry Wall Boards**



Product Description:

LATICRETE® DWA 215 is a modified Polyurethane Adhesive designed for the installation of glass mosaic tile, ceramic tile, vitrified tile and natural stone on most drywall boards and clean dry cement based surfaces. LATICRETE® DWA 215 is a factory made pail consisting of pre-blended single component adhesive which is ready to use.

Applications:

For commercial and residential installations of ceramic tile, vitrified tile and natural stone over most drywall boards and clean cement based surfaces. Used where installations must resist physical abuse, shock, and mild chemicals. (Interior & Exterior)

Advantages:

- Single component / Ready to use
- No on-site mixing
- Economical
- High bond strength
- Fast installation - Saves time
- Can be used on various dry wall boards

Suitable Substrates:

- Concrete*
- Plywood
- Calcium silicate board
- Concrete masonry*
- AAC Block masonry*
- Cement backer board**
- Other resilient tile and stone
- Cement mortar beds*
- Gypsum wall board
- Bison panel board
- Cement plaster*
- Cement terrazzo*
- Existing ceramic tile

* All cement based surfaces should have been cured as per standard practices and shall be dry for tiling

**Consult cement backer board manufacturer for specific installation recommendations and to verify acceptability for exterior use.

Note: Not for use on metal & plastic substrates and metal tiles.

Coverage:

Approx 55 - 58 sq. ft. per 20 kg unit with a 1/4" x 1/4" (6mm x 6mm) square notch trowel

Packaging: 20 kg pail

Shelf Life:

Factory sealed containers of this product are guaranteed to be of first quality for one (1) year.

Technical Data

Applicable Standard:

- ANSI A 118.4 & 136.1
- EN:D2TE

Performance Properties

Test	Test Method	Results
Shear Adhesion Strength - Initial	EN 1324 : 1996	> 1.5 MPa
Shear Adhesion Strength after Heat Ageing	EN 1324 : 1996	> 1.5 Mpa
Open Time: Tensile Adhesion Strength (Not less than 20 Minutes)	EN 1346	> 1 Mpa
Slip Resistance	EN 1308	<0.5mm
Adhesion Strength – Water immersion	EN - 1324:1996 - 7.3	>0.5 Mpa
Adhesion at elevated Temperature	EN - 1324:1996 - 7.5	> 1 MPa
Extended open time: Tensile adhesion strength-after not less than 30 minutes	EN 1346	> 0.5 Mpa

Complies to EN & ISO standards:

D2 TE Exceeds ANSI A136.1 in performance

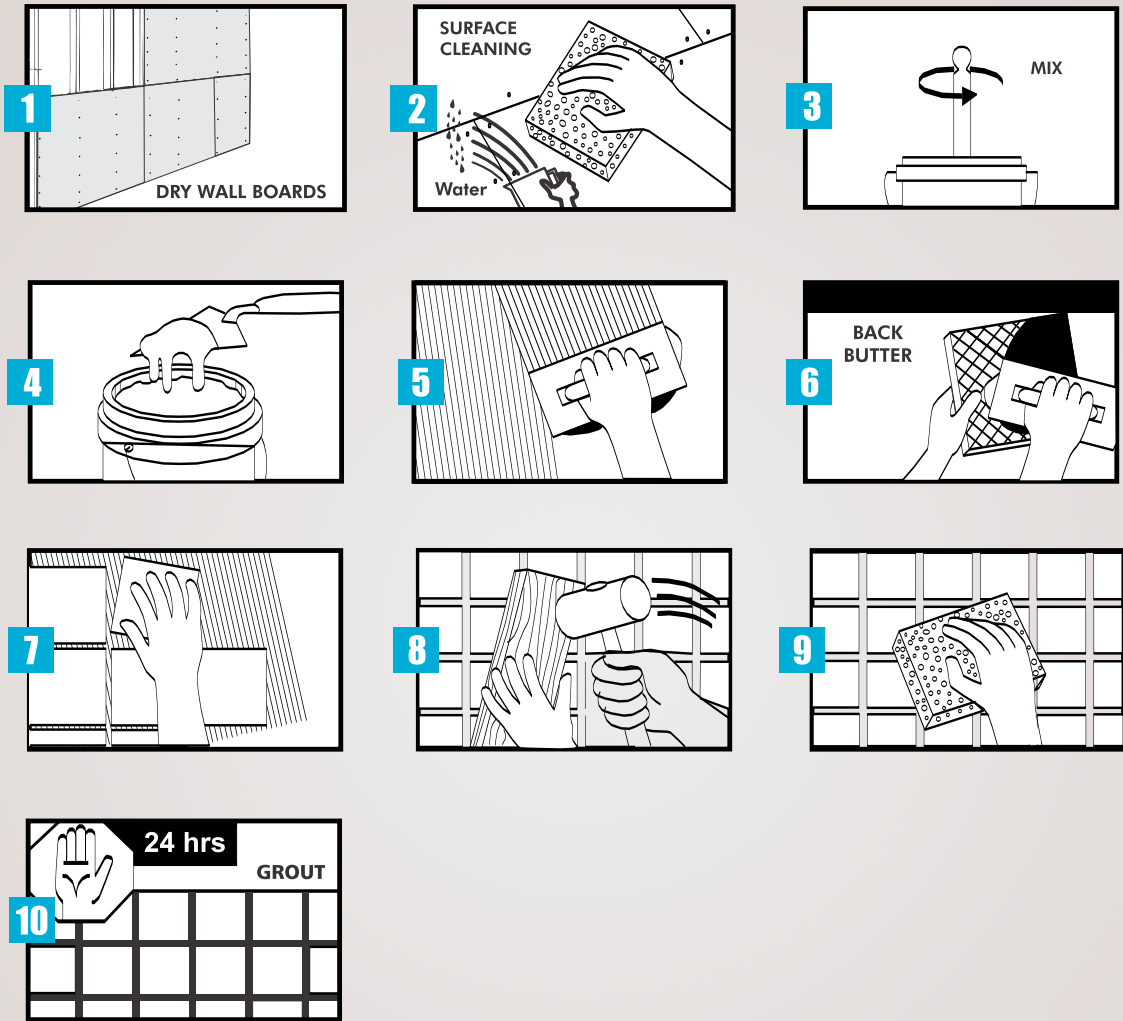
Working Properties at 70°F (21°C)

Open Time	> 20 Minutes
Adjustment Time	>30 Minutes
Time to Traffic	24 hours



LATICRETE® DWA 215

Method of Application



MYK LATICRETE INDIA PVT. LTD.,

Registered Office: 8-2-703/A, 4th Floor, Leela Gopal Towers, Road No. 12, Banjara Hills, Hyderabad - 500 034

Ph: +91-40-30413100, Fax: +91 40 2337 8784 e-mail: contact@myklaticrete.com www.myklaticrete.com

CIN: U99999TG1999PTC031624

Regional Offices: Ahmedabad : 09377532991 | Ambala : 0171-2611041 | Bengaluru : 080-26757961 | Bhubaneswar : 0674-3263100 | Chennai : 044-43518843 | Coimbatore : 0422-2644485 | Ghaziabad : 0120-4294495 | Hubli : 0836-2364245 | Indore : 09301532851 | Jaipur : 09351002315 | Kochi : 0484-2577113 | Kolkata : 033-65331259 | Lucknow : 0522-6518555 | Ludhiana : 0161-2503686 | Madurai : 0452-2300336 | Mangalore : 0824-2426553 | Mumbai : 022-32688795 Nagpur : 09325250899 | New Delhi : 011-43020145 | Pune : 020-32535985 | Vijayawada : 9396707764 | Visakhapatnam : 0891-3195577.